



This bulletin provides a breakdown of all attendancesⁱ at University Hospital Aintree Accident and Emergency department (AED) between December 2008 and November 2009.

Figure 1 illustrates the number of AED attendances by month of attendance. March had the highest number of attendances at Aintree AED during this time period (n=7,607)

Figure 1: Total number of AED attendances by month, December 2008 to November 2009

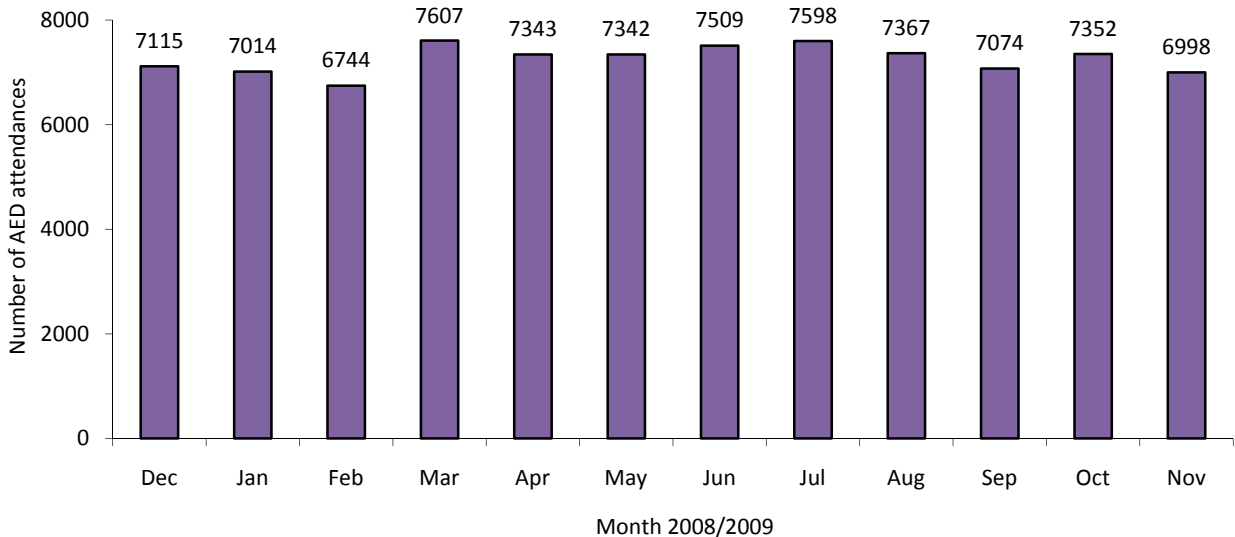


Figure 2 shows AED attendances by gender. There were a similar number of male and female attendances to Aintree AED.

Figure 2: Gender of AED attendances by month, December 2008 to November 2009

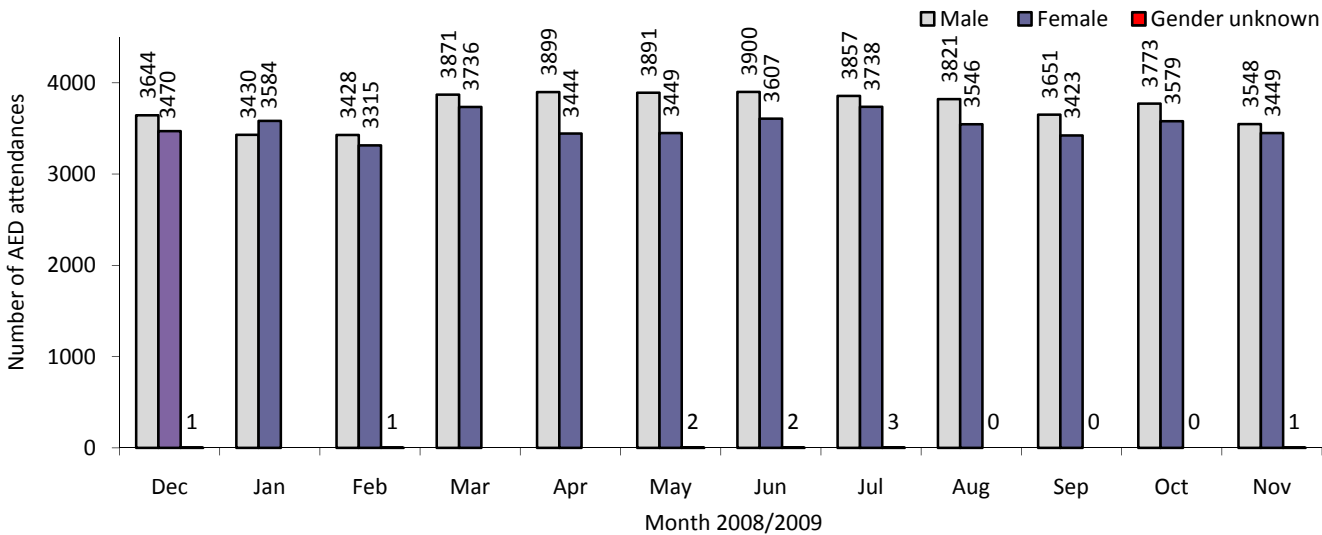


Figure 3 illustrates age group of AED attendances for each month. Nearly all (99%) AED attendances were aged 15 plus. This is probably due to the close proximity of a local children’s AED department (Alder Hey).

Figure 3: Age group of AED attendances by month, December 2008 to November 2009

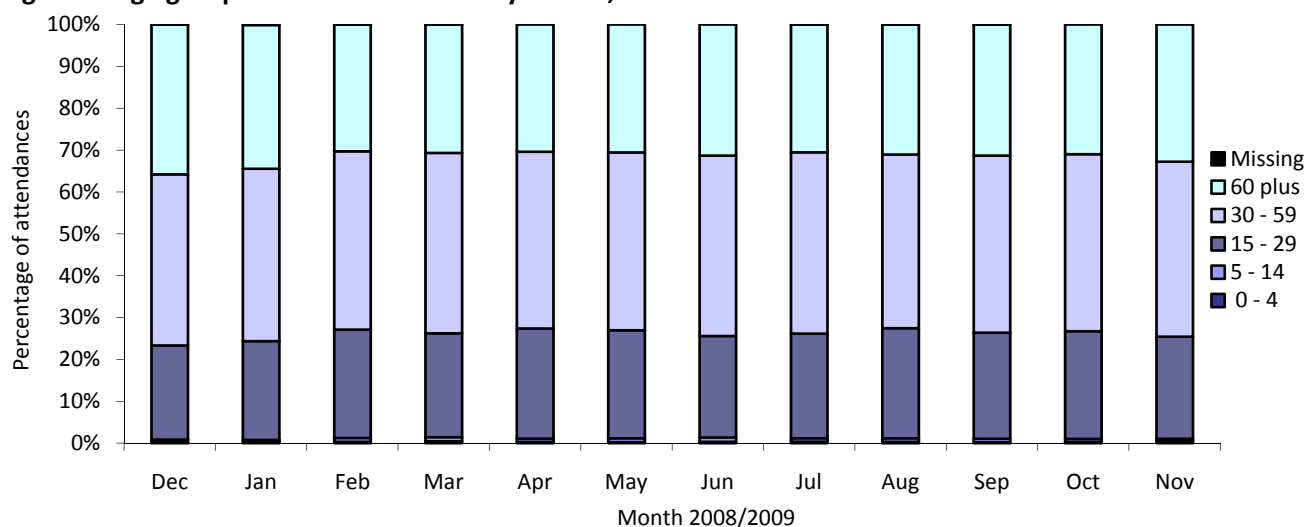


Table 1 details the injury group of AED attendances. In over three quarters (80%) of attendances, injury group was recorded as other or unknown. This group includes AED attendances that are not injury related, such as heart attacks. Of those injury groups recorded, falls accounted for 48% of attendances, road traffic collisions (RTC) 16% and assaults 16%.

Table 1: AED attendances by injury group and month, December 2008 to November 2009ⁱⁱ

Injury group	Dec	Jan	Feb	Mar	Apr	May	Jun	Jul	Aug	Sep	Oct	Nov	Total	%
Other/unknown	5701	5527	5372	6036	5812	5813	6040	6205	5813	5615	5989	5603	69544	80
Fall	722	772	659	695	672	690	736	694	683	684	661	655	8323	10
RTC	232	243	248	267	240	256	227	243	234	229	208	255	2882	3
Assault	230	221	192	241	285	278	241	192	301	224	218	192	2815	3
Sport	97	130	136	209	185	144	138	136	160	190	176	156	1857	2
Self	127	111	127	150	143	138	124	123	170	129	97	131	1570	2
Firework	***	***	***	***	***	***	***	***	***	***	***	***	37	0
Dead	***	***	***	***	***	***	***	***	***	***	***	***	35	0
Total	7115	7014	6744	7607	7343	7342	7509	7598	7367	7074	7352	6998	87063	100

Table 2 shows the location where falls occurred for patients presenting with fall-related injuries. The primary location for falls was the home (53%), followed by a public space (30%).

Table 2: Fall attendances by location of incident and month, December 2008 to November 2009

Fall location	Dec	Jan	Feb	Mar	Apr	May	Jun	Jul	Aug	Sep	Oct	Nov	Total	%
Home	391	387	325	393	371	386	380	350	363	359	360	365	4430	53
Public space	215	257	227	185	168	187	223	203	217	211	191	183	2467	30
Other	71	90	72	80	108	82	99	107	78	76	69	66	998	12
Work	41	28	28	30	25	29	28	29	24	36	38	37	373	4
School	***	***	***	***	***	***	***	***	***	***	***	***	40	0
Walton Prison	***	***	***	***	***	***	***	***	***	***	***	***	6	0
Altcourse Prison	***	***	***	***	***	***	***	***	***	***	***	***	***	0
In patient - Aintree	***	***	***	***	***	***	***	***	***	***	***	***	***	0
Total	722	772	659	695	672	690	736	694	683	684	661	655	8323	100

Table 3 provides data on the discharge method of AED attendances at University Hospital Aintree. Just under half (46%) of AED attendees were dischargedⁱⁱⁱ.

Table 3: Discharge method of trauma attendances by month, December 2008 to November 2009

Discharge method	Dec	Jan	Feb	Mar	Apr	May	Jun	Jul	Aug	Sep	Oct	Nov	Total	%
Admitted to hospital	2811	2741	2582	2767	2752	2720	2671	2843	2623	2625	2730	2626	32491	37
Discharged	2030	1923	1806	2204	1986	1965	2077	2045	2186	1942	2107	1958	24229	28
Discharged to care of GP	728	688	753	701	770	757	704	769	681	783	767	815	8916	10
Discharged to return if condition worsens	291	409	353	509	455	416	513	528	527	423	454	316	5194	6
Fracture clinic	275	280	282	318	300	331	372	306	321	338	303	295	3721	4
Patient left department	229	193	203	232	267	286	293	249	201	201	222	197	2773	3
AED clinic	212	224	228	248	188	203	197	236	196	186	196	198	2512	3
Other/unknown	138	153	139	190	146	180	171	177	202	176	147	194	2013	2
Discharged to other hospital	69	77	91	86	85	117	99	103	106	82	104	90	1109	1
Physiotherapy AED	73	81	75	98	87	107	117	94	69	85	73	84	1043	1
Own discharge	74	79	65	65	86	63	82	66	76	46	55	59	816	1
Did not answer when called for treatment	59	35	53	59	84	72	84	67	44	59	58	41	715	1
Ear/Nose/Throat	47	53	41	54	46	43	44	45	40	42	48	42	545	1
Ophthalmology clinic	26	17	26	31	24	18	32	28	24	25	25	22	298	0
Died in department	21	23	15	14	19	17	16	12	17	17	23	19	213	0
Maxillary Facial Unit	11	15	14	20	19	16	12	11	18	14	12	13	175	0
Discharged to dentist	***	***	***	***	9	9	12	8	12	15	13	14	103	0
Sent to theatre	9	12	8	***	10	11	7	***	15	7	7	9	103	0
Police custody	5	7	6	***	6	7	***	7	8	5	6	5	67	0
Falls Clinic	***	***	***	***	***	***	***	***	***	***	***	***	13	0
Brought in dead	***	***	***	***	***	***	***	***	***	***	***	***	***	0
Transfer to ward	***	***	***	***	***	***	***	***	***	***	***	***	***	0
Xray tomorrow	***	***	***	***	***	***	***	***	***	***	***	***	***	0
Total	7115	7014	6744	7607	7343	7342	7509	7598	7367	7074	7352	6998	87063	100

Assault questionnaire

In addition to the information presented above assault attendees at University Hospital Aintree are asked by reception staff whether they would be willing to answer more detailed questions about their assault. This includes information such as the specific location of assault (e.g. pub name/street), which is provided by TIIG to local agencies such as Crime and Disorder Reduction Partnerships (CDRPs), in a separate report to the one produced here. For further information on this report please contact the authors, whose details can be found at the end of this report. A general summary of the assault questionnaire is provided below.

Assault attendees presenting at University Hospital Aintree between December 2008 and November 2009 were primarily male (74%) and aged between 15 and 29 years (55%). Table four shows that of those known^{iv}, 40% of assault attendances had no intention of informing the police of their attack.

Table 4: Assault attendances by whether they have informed/intend to inform the police and month, December 2008 to November 2009

Police	Dec	Jan	Feb	Mar	Apr	May	Jun	Jul	Aug	Sep	Oct	Nov	Total	%
Unknown	161	162	139	169	221	197	165	150	228	178	153	121	2044	73
No	28	24	24	39	27	26	27	15	33	13	19	32	307	11
Yes	41	35	29	33	37	55	49	27	40	33	46	39	464	16
Total	230	221	192	241	285	278	241	192	301	224	218	192	2815	100

Table 5 provides data on whether an assault attendee had consumed alcohol within three hours prior to their attack. Where data was collected 55% of assault attendances had consumed alcohol.

Table 5: Assault attendances by whether they had consumed alcohol within three hours prior to the assault and month, December 2008 to November 2009

Drank alcohol	Dec	Jan	Feb	Mar	Apr	May	Jun	Jul	Aug	Sep	Oct	Nov	Total	%
Unknown	159	167	142	182	235	206	179	155	236	184	152	122	2119	75
No	26	27	15	21	25	24	33	19	33	24	34	34	315	11
Yes	45	27	35	38	25	48	29	18	32	16	32	36	381	14
Total	230	221	192	241	285	278	241	192	301	224	218	192	2815	100

Table six illustrates the location where assaults occurred for patients presenting with assault-related injuries. Three quarters (75%) of all assault locations were unknown during December 2008 to November 2009. Of those known, half (50%) occurred on the street.

Table 6: Assault attendances by location of incident and month, December 2008 to November 2009

Assault location	Dec	Jan	Feb	Mar	Apr	May	Jun	Jul	Aug	Sep	Oct	Nov	Total	%
Unknown	164	167	138	183	232	209	176	151	233	186	149	118	2106	75
Street	38	19	30	35	31	33	30	24	37	19	33	25	354	13
Your home	6	12	***	***	6	8	15	8	8	7	9	8	96	3
Other	***	8	5	5	10	6	6	***	7	***	10	12	80	3
Bar/pub	10	***	8	10	***	16	***	***	***	***	8	9	76	3
Workplace	***	5	***	***	***	***	8	***	7	***	***	9	43	2
Other persons home	***	6	5	***	***	***	***	***	***	***	***	***	41	1
Club	***	***	***	***	***	***	***	***	***	***	***	***	8	0
Public place	***	***	***	***	***	***	***	***	***	***	***	6	7	0
Public transport	***	***	***	***	***	***	***	***	***	***	***	***	***	0
School	***	***	***	***	***	***	***	***	***	***	***	***	***	0
Total	230	221	192	241	285	278	241	192	301	224	218	192	2815	100

Table seven illustrates the number of individuals/attackers involved in the assault. During December 2008 to November 2009 information on number of attackers was not collected from the majority (72%) of assault patients. Where data was collected, half (49%) of assault patients had been assaulted by more than one person.

Table 7: Assault attendances by number of individuals involved in assault and month, December 2008 to November 2009

No. attackers	Dec	Jan	Feb	Mar	Apr	May	Jun	Jul	Aug	Sep	Oct	Nov	Total	%
Unknown	160	160	137	167	218	198	166	149	230	179	151	120	2035	72
1	33	34	24	37	33	35	35	27	43	20	40	40	401	14
2	18	10	9	10	11	25	11	6	10	8	7	10	135	5
3	8	8	***	8	6	6	9	7	9	7	***	7	83	3
4	***	***	6	7	5	***	9	***	***	***	6	***	51	2
5+	10	6	12	12	12	10	11	***	7	***	10	11	110	4
Total	230	221	192	241	285	278	241	192	301	224	218	192	2815	100

Table eight illustrates gender of attackers. Of those known 84% were male, compared with 11% female.

Table 8: Assault attendances by gender of attackers and month, December 2008 to November 2009

Attacker gender	Dec	Jan	Feb	Mar	Apr	May	Jun	Jul	Aug	Sep	Oct	Nov	Total	%
Unknown	161	162	137	168	219	198	166	149	231	179	153	120	2043	73
Female	<5	6	8	<5	11	10	8	<5	9	5	7	9	85	3
Male	62	49	44	66	51	68	61	37	56	35	57	62	648	23
Both	<5	<5	<5	<5	<5	<5	6	<5	5	5	<5	<5	39	1
Total	230	221	192	241	285	278	241	192	301	224	218	192	2815	100

Table nine shows that the relationship between assault attendee and those involved in the assault was unknown in three quarters (76%) of incidents during December 2008 to November 2009. Where data was collected, six in ten (64%) assault patients had been assaulted by a stranger.

Table 9: Assault attendances by relationship with attacker and month, December 2008 to November 2009

Relationship	Dec	Jan	Feb	Mar	Apr	May	Jun	Jul	Aug	Sep	Oct	Nov	Total	%
Unknown	178	174	145	173	229	216	181	150	232	180	153	127	2138	76
Stranger	33	28	32	53	36	42	32	19	47	22	48	40	432	15
Acquaintance/friend	8	8	7	7	10	8	14	***	9	8	7	8	98	3
Partner	***	***	***	***	6	5	***	5	6	***	***	***	41	1
Family member	***	***	***	***	***	5	***	***	***	***	***	***	39	1
Work Client/customer	***	***	***	***	***	***	***	***	***	***	***	6	25	1
Ex-partner	***	***	***	***	***	***	***	***	***	***	***	***	21	1
Bouncer	***	***	***	***	***	***	***	5	***	***	***	***	18	1
Work mate/colleague	***	***	***	***	***	***	***	***	***	***	***	***	***	0
Total	230	221	192	241	285	278	241	192	301	224	218	192	2815	100

Table 10 shows method of attack. Of those known, 65% were attacked with a body part, such as a fist, 11% with a blunt object, 4% with a bottle and 4% with a knife.

Table 10: Assault attendances by method of attack and month, December 2008 to November 2009

Weapon	Dec	Jan	Feb	Mar	Apr	May	Jun	Jul	Aug	Sep	Oct	Nov	Total	%
Unknown	183	177	144	177	233	220	183	150	233	179	156	135	2170	77
Body part	34	30	37	39	41	41	32	34	46	32	37	45	448	16
Blunt object	***	***	7	10	***	11	12	***	9	6	6	***	76	3
Other	***	7	***	6	5	***	***	***	6	***	8	***	52	2
Bottle	***	***	***	***	***	***	5	***	***	***	7	***	29	1
Knife	***	***	***	***	***	***	5	***	***	***	***	***	29	1
Glass	***	***	***	***	***	***	***	***	***	***	***	***	***	0
Firearm	***	***	***	***	***	***	***	***	***	***	***	***	***	0
Total	230	221	192	241	285	278	241	192	301	224	218	192	2815	100

Table 11 shows that of those known, 11% had previously been attacked by the perpetrator/perpetrators.

Table 11: Assault attendances by whether they have been previously attacked by the perpetrator and month, December 2008 to November 2009

Previously attacked	Dec	Jan	Feb	Mar	Apr	May	Jun	Jul	Aug	Sep	Oct	Nov	Total	%
Unknown	178	173	141	172	228	216	180	150	230	179	151	126	2124	75
No	47	40	51	60	52	54	55	36	64	37	61	59	616	22
Yes	5	8	0	9	5	8	6	6	7	8	6	7	75	3
Total	230	221	192	241	285	278	241	192	301	224	218	192	2815	100

Published January 2010

Dan Hungerford (TIIG Analyst)

Centre for Public Health, Research Directorate, Liverpool John Moores University, Liverpool, L3 2AJ

Tel: 0151 231 8724 Email: d.j.hungerford@ljmu.ac.uk

Website: www.tiig.info (please note data requests should be made through the website)

ⁱ For other AEDs, TIIG reports on trauma incidents only. However, this report includes all attendances at Aintree AED. This is due to the high number of 'unknown' injury groups amongst attendances at Aintree AED which makes it difficult to analyse trauma cases separately.

ⁱⁱ ***Please note that all numbers less than five have been suppressed in line with patient confidentiality and if there is only one number less than five in a category then two numbers will be suppressed at the next level in order to prevent back calculations from totals.

ⁱⁱⁱ Includes: discharged, discharged to care of GP, discharged – to return if condition worsens, discharged to another hospital, own discharge and discharged to dentist.

^{iv} Please note that although a patient may complete the assault patient questionnaire data may not be provided for each question as the patient can refuse or be unable to answer particular questions. Data provided in the following analyses represent those patients who completed each question, respectively.